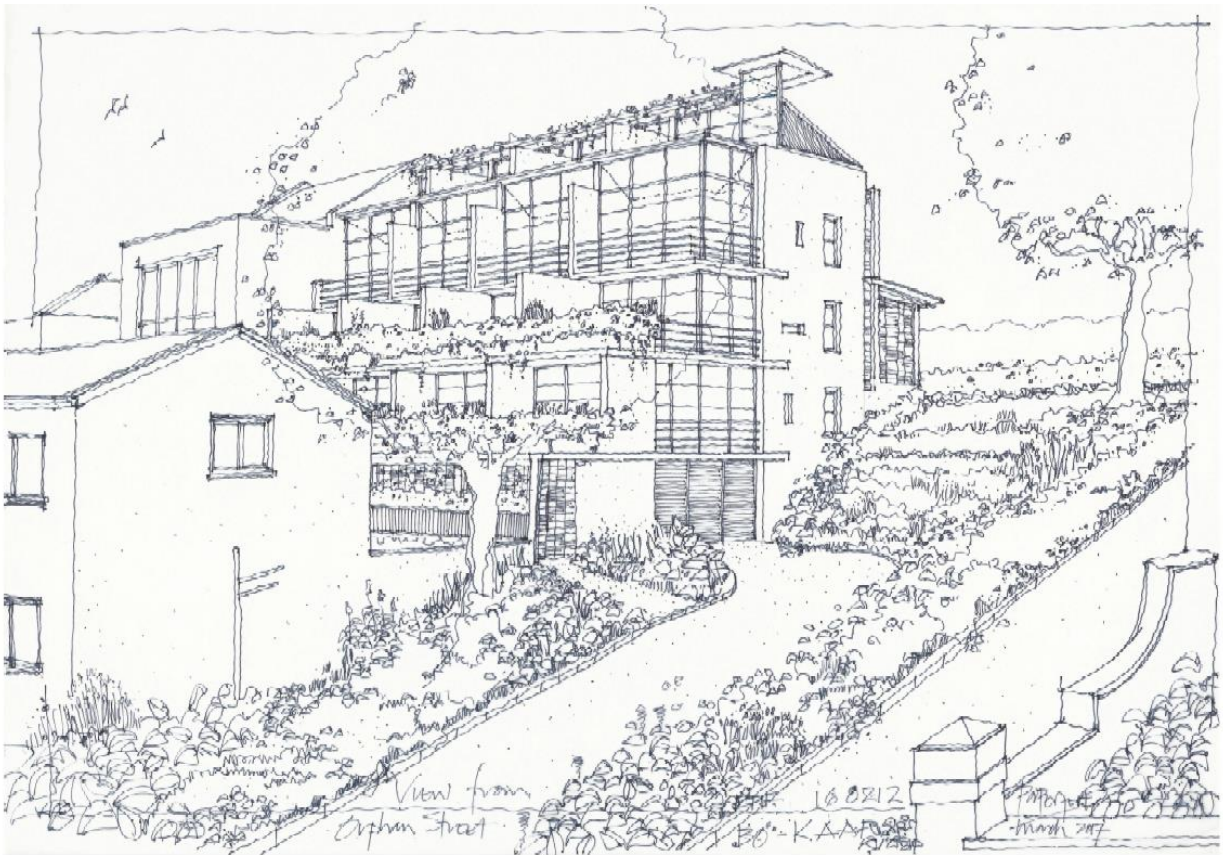


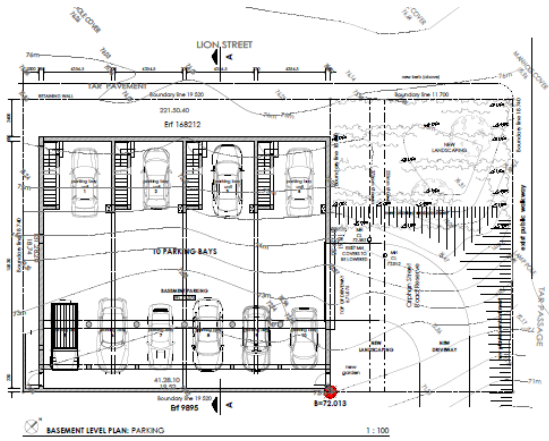
37 LION STREET



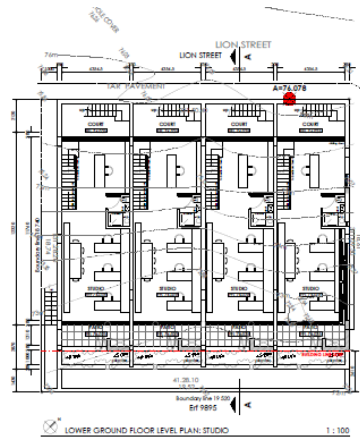
RICHARD PERFECT + HAILEY TIPPETT



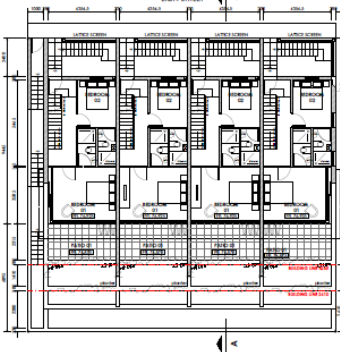
RICHARD PERFECT + HAILEY TIPPETT



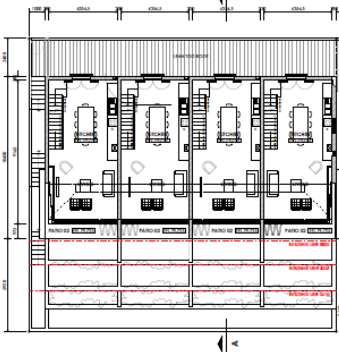
BASEMENT LEVEL PLAN: PARKING 1:100



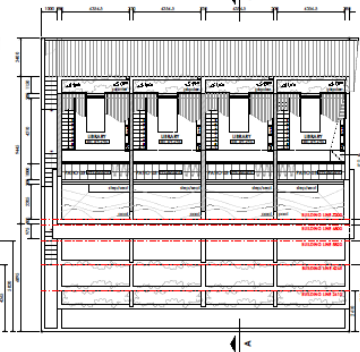
LOWER GROUND FLOOR LEVEL PLAN: STUDIO 1:100



GROUND FLOOR LEVEL PLAN: BEDROOMS 1:100



FIRST FLOOR LEVEL PLAN: KITCHEN / LIVING 1:100



ROOF LEVEL PLAN: ROOF DECK 1:100

NOTES

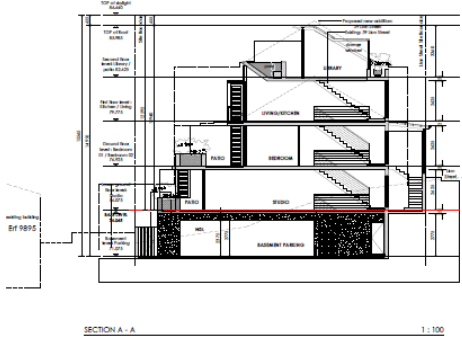
- 1. ALL DIMENSIONS UNLESS OTHERWISE SPECIFIED ARE IN METERS.
- 2. FLOOR AREA:
- 3. TOTAL FLOOR AREA: 1150.27 m²
- 4. TOTAL GROUND FLOOR AREA: 224.54 m²
- 5. TOTAL LOWER GROUND FLOOR AREA: 48.82 m²
- 6. TOTAL UPPER GROUND FLOOR AREA: 224.54 m²
- 7. TOTAL LOWER GROUND FLOOR AREA (Basement): 174.22 m²
- 8. TOTAL UPPER GROUND FLOOR AREA (Basement): 48.82 m²
- 9. TOTAL FLOOR AREA (Basement & Ground): 174.22 m²
- 10. TOTAL FLOOR AREA (Basement & Ground): 174.22 m²
- 11. TOTAL FLOOR AREA (Basement & Ground): 174.22 m²
- 12. TOTAL FLOOR AREA (Basement & Ground): 174.22 m²
- 13. TOTAL FLOOR AREA (Basement & Ground): 174.22 m²
- 14. TOTAL FLOOR AREA (Basement & Ground): 174.22 m²
- 15. TOTAL FLOOR AREA (Basement & Ground): 174.22 m²
- 16. TOTAL FLOOR AREA (Basement & Ground): 174.22 m²
- 17. TOTAL FLOOR AREA (Basement & Ground): 174.22 m²
- 18. TOTAL FLOOR AREA (Basement & Ground): 174.22 m²
- 19. TOTAL FLOOR AREA (Basement & Ground): 174.22 m²
- 20. TOTAL FLOOR AREA (Basement & Ground): 174.22 m²

RICHARD PERFECT ARCHITECTS

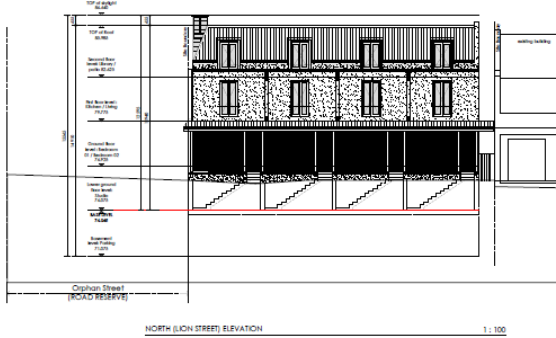
PROPOSED NEW ROW HOUSES FOR RICHARD PERFECT ARCHITECTS
 BROOME BR 168212, 37 LION STREET, BROOME, WESTERN AUSTRALIA

Project	SK9000101	F
Date	11/10/2023	
Author		
Checked		
Scale	1:100	

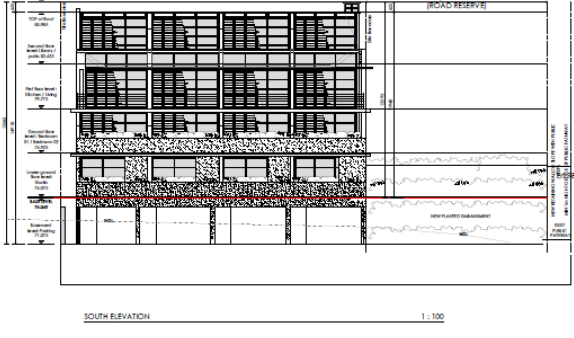
SKETCH PLANS - PLANS



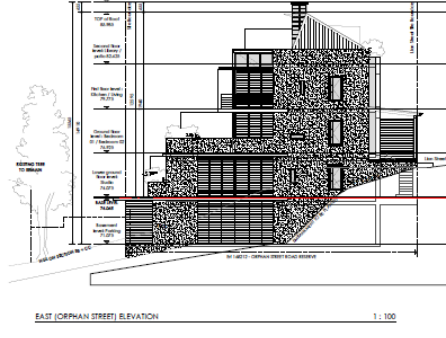
SECTION A-A 1:100



NORTH (LION STREET) ELEVATION 1:100



SOUTH ELEVATION 1:100



EAST (DIPHAN STREET) ELEVATION 1:100

NOTES

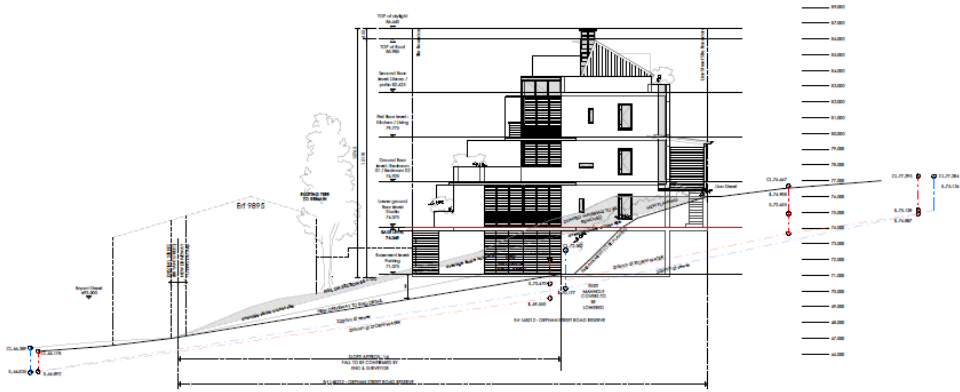
- 1. ALL DIMENSIONS UNLESS OTHERWISE SPECIFIED ARE IN METERS.
- 2. FLOOR AREA:
- 3. TOTAL FLOOR AREA: 1150.27 m²
- 4. TOTAL GROUND FLOOR AREA: 224.54 m²
- 5. TOTAL LOWER GROUND FLOOR AREA: 48.82 m²
- 6. TOTAL UPPER GROUND FLOOR AREA: 224.54 m²
- 7. TOTAL LOWER GROUND FLOOR AREA (Basement): 174.22 m²
- 8. TOTAL UPPER GROUND FLOOR AREA (Basement): 48.82 m²
- 9. TOTAL FLOOR AREA (Basement & Ground): 174.22 m²
- 10. TOTAL FLOOR AREA (Basement & Ground): 174.22 m²
- 11. TOTAL FLOOR AREA (Basement & Ground): 174.22 m²
- 12. TOTAL FLOOR AREA (Basement & Ground): 174.22 m²
- 13. TOTAL FLOOR AREA (Basement & Ground): 174.22 m²
- 14. TOTAL FLOOR AREA (Basement & Ground): 174.22 m²
- 15. TOTAL FLOOR AREA (Basement & Ground): 174.22 m²
- 16. TOTAL FLOOR AREA (Basement & Ground): 174.22 m²
- 17. TOTAL FLOOR AREA (Basement & Ground): 174.22 m²
- 18. TOTAL FLOOR AREA (Basement & Ground): 174.22 m²
- 19. TOTAL FLOOR AREA (Basement & Ground): 174.22 m²
- 20. TOTAL FLOOR AREA (Basement & Ground): 174.22 m²

RICHARD PERFECT ARCHITECTS

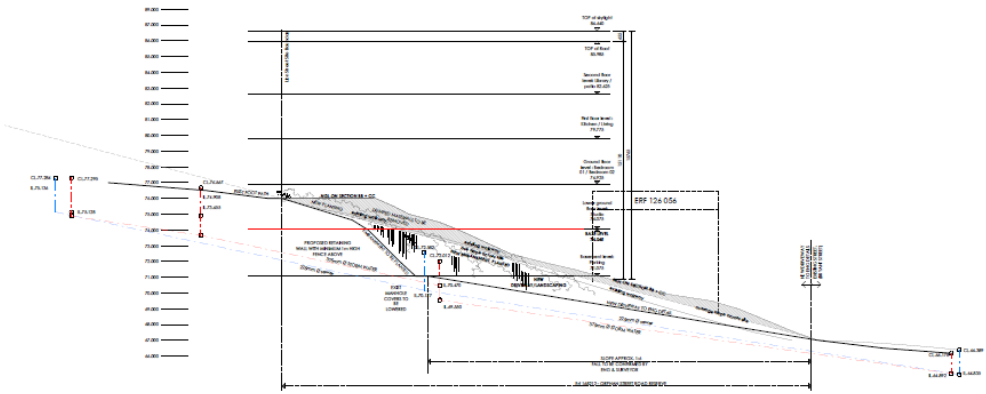
PROPOSED NEW ROW HOUSES FOR RICHARD PERFECT ARCHITECTS
 BROOME BR 168212, 37 LION STREET, BROOME, WESTERN AUSTRALIA

Project	SK9000102	E
Date	11/10/2023	
Author		
Checked		
Scale	1:100	

SKETCH PLANS - SECTION AA & ELEVATIONS



SECTION BB 1:100

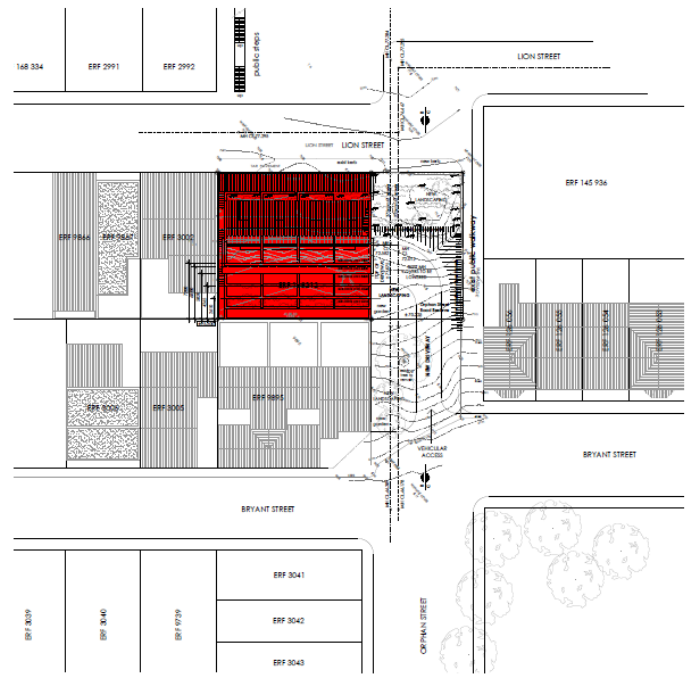


SECTION CC 1:100

NOTES

RF1	RECEPTION	0.00
RF2	OFFICE	0.00
RF3	OFFICE	0.00
RF4	OFFICE	0.00
RF5	OFFICE	0.00
RF6	OFFICE	0.00
RF7	OFFICE	0.00
RF8	OFFICE	0.00
RF9	OFFICE	0.00
RF10	OFFICE	0.00
RF11	OFFICE	0.00
RF12	OFFICE	0.00
RF13	OFFICE	0.00
RF14	OFFICE	0.00
RF15	OFFICE	0.00
RF16	OFFICE	0.00
RF17	OFFICE	0.00
RF18	OFFICE	0.00
RF19	OFFICE	0.00
RF20	OFFICE	0.00
RF21	OFFICE	0.00
RF22	OFFICE	0.00
RF23	OFFICE	0.00
RF24	OFFICE	0.00
RF25	OFFICE	0.00
RF26	OFFICE	0.00
RF27	OFFICE	0.00
RF28	OFFICE	0.00
RF29	OFFICE	0.00
RF30	OFFICE	0.00
RF31	OFFICE	0.00
RF32	OFFICE	0.00
RF33	OFFICE	0.00
RF34	OFFICE	0.00
RF35	OFFICE	0.00
RF36	OFFICE	0.00
RF37	OFFICE	0.00
RF38	OFFICE	0.00
RF39	OFFICE	0.00
RF40	OFFICE	0.00
RF41	OFFICE	0.00
RF42	OFFICE	0.00
RF43	OFFICE	0.00
RF44	OFFICE	0.00
RF45	OFFICE	0.00
RF46	OFFICE	0.00
RF47	OFFICE	0.00
RF48	OFFICE	0.00
RF49	OFFICE	0.00
RF50	OFFICE	0.00
RF51	OFFICE	0.00
RF52	OFFICE	0.00
RF53	OFFICE	0.00
RF54	OFFICE	0.00
RF55	OFFICE	0.00
RF56	OFFICE	0.00
RF57	OFFICE	0.00
RF58	OFFICE	0.00
RF59	OFFICE	0.00
RF60	OFFICE	0.00
RF61	OFFICE	0.00
RF62	OFFICE	0.00
RF63	OFFICE	0.00
RF64	OFFICE	0.00
RF65	OFFICE	0.00
RF66	OFFICE	0.00
RF67	OFFICE	0.00
RF68	OFFICE	0.00
RF69	OFFICE	0.00
RF70	OFFICE	0.00
RF71	OFFICE	0.00
RF72	OFFICE	0.00
RF73	OFFICE	0.00
RF74	OFFICE	0.00
RF75	OFFICE	0.00
RF76	OFFICE	0.00
RF77	OFFICE	0.00
RF78	OFFICE	0.00
RF79	OFFICE	0.00
RF80	OFFICE	0.00
RF81	OFFICE	0.00
RF82	OFFICE	0.00
RF83	OFFICE	0.00
RF84	OFFICE	0.00
RF85	OFFICE	0.00
RF86	OFFICE	0.00
RF87	OFFICE	0.00
RF88	OFFICE	0.00
RF89	OFFICE	0.00
RF90	OFFICE	0.00
RF91	OFFICE	0.00
RF92	OFFICE	0.00
RF93	OFFICE	0.00
RF94	OFFICE	0.00
RF95	OFFICE	0.00
RF96	OFFICE	0.00
RF97	OFFICE	0.00
RF98	OFFICE	0.00
RF99	OFFICE	0.00
RF100	OFFICE	0.00

RICHARD PERFECT ARCHITECTS
 PROPOSED NEW ROW HOUSES FOR RAPERFECT & AN
 BROOMER ERF 148212, 37 LION STREET, BO-KAAP
 PROJECT NO: 148212-37 LION STREET, BO-KAAP
 DRAWING NO: SK 9000 04 E
 DATE: 2024-08-01

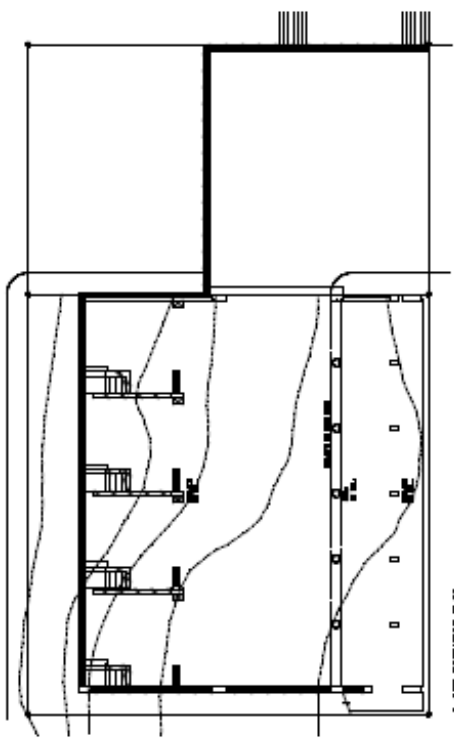


1:200 SITE DEVELOPMENT PLAN

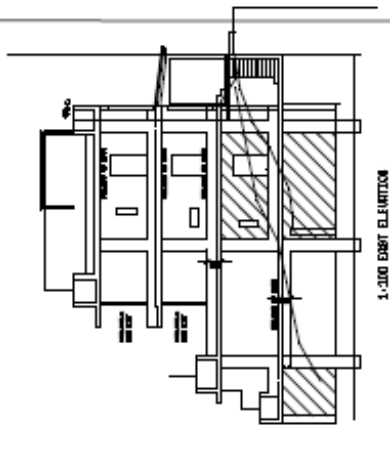
NOTES

RF1	RECEPTION	0.00
RF2	OFFICE	0.00
RF3	OFFICE	0.00
RF4	OFFICE	0.00
RF5	OFFICE	0.00
RF6	OFFICE	0.00
RF7	OFFICE	0.00
RF8	OFFICE	0.00
RF9	OFFICE	0.00
RF10	OFFICE	0.00
RF11	OFFICE	0.00
RF12	OFFICE	0.00
RF13	OFFICE	0.00
RF14	OFFICE	0.00
RF15	OFFICE	0.00
RF16	OFFICE	0.00
RF17	OFFICE	0.00
RF18	OFFICE	0.00
RF19	OFFICE	0.00
RF20	OFFICE	0.00
RF21	OFFICE	0.00
RF22	OFFICE	0.00
RF23	OFFICE	0.00
RF24	OFFICE	0.00
RF25	OFFICE	0.00
RF26	OFFICE	0.00
RF27	OFFICE	0.00
RF28	OFFICE	0.00
RF29	OFFICE	0.00
RF30	OFFICE	0.00
RF31	OFFICE	0.00
RF32	OFFICE	0.00
RF33	OFFICE	0.00
RF34	OFFICE	0.00
RF35	OFFICE	0.00
RF36	OFFICE	0.00
RF37	OFFICE	0.00
RF38	OFFICE	0.00
RF39	OFFICE	0.00
RF40	OFFICE	0.00
RF41	OFFICE	0.00
RF42	OFFICE	0.00
RF43	OFFICE	0.00
RF44	OFFICE	0.00
RF45	OFFICE	0.00
RF46	OFFICE	0.00
RF47	OFFICE	0.00
RF48	OFFICE	0.00
RF49	OFFICE	0.00
RF50	OFFICE	0.00
RF51	OFFICE	0.00
RF52	OFFICE	0.00
RF53	OFFICE	0.00
RF54	OFFICE	0.00
RF55	OFFICE	0.00
RF56	OFFICE	0.00
RF57	OFFICE	0.00
RF58	OFFICE	0.00
RF59	OFFICE	0.00
RF60	OFFICE	0.00
RF61	OFFICE	0.00
RF62	OFFICE	0.00
RF63	OFFICE	0.00
RF64	OFFICE	0.00
RF65	OFFICE	0.00
RF66	OFFICE	0.00
RF67	OFFICE	0.00
RF68	OFFICE	0.00
RF69	OFFICE	0.00
RF70	OFFICE	0.00
RF71	OFFICE	0.00
RF72	OFFICE	0.00
RF73	OFFICE	0.00
RF74	OFFICE	0.00
RF75	OFFICE	0.00
RF76	OFFICE	0.00
RF77	OFFICE	0.00
RF78	OFFICE	0.00
RF79	OFFICE	0.00
RF80	OFFICE	0.00
RF81	OFFICE	0.00
RF82	OFFICE	0.00
RF83	OFFICE	0.00
RF84	OFFICE	0.00
RF85	OFFICE	0.00
RF86	OFFICE	0.00
RF87	OFFICE	0.00
RF88	OFFICE	0.00
RF89	OFFICE	0.00
RF90	OFFICE	0.00
RF91	OFFICE	0.00
RF92	OFFICE	0.00
RF93	OFFICE	0.00
RF94	OFFICE	0.00
RF95	OFFICE	0.00
RF96	OFFICE	0.00
RF97	OFFICE	0.00
RF98	OFFICE	0.00
RF99	OFFICE	0.00
RF100	OFFICE	0.00

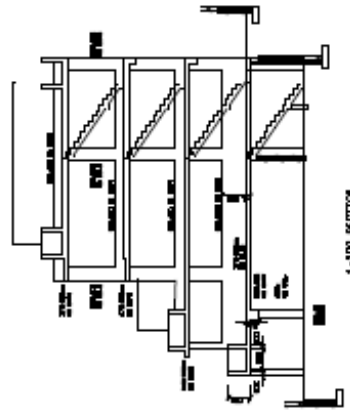
RICHARD PERFECT ARCHITECTS
 PROPOSED NEW ROW HOUSES FOR RAPERFECT & AN
 BROOMER ERF 148212, 37 LION STREET, BO-KAAP
 PROJECT NO: 148212-37 LION STREET, BO-KAAP
 DRAWING NO: SK 9000 03 F
 DATE: 2024-08-01



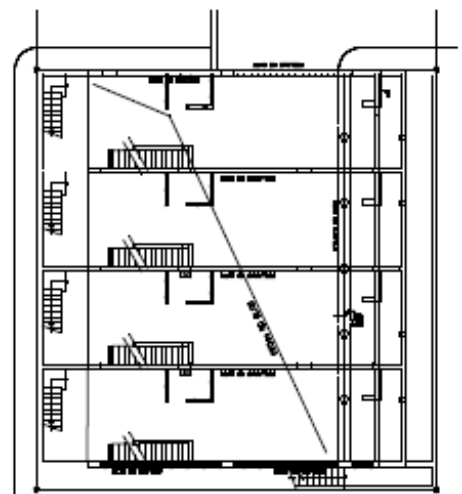
1:100 WAREHISE PLAN



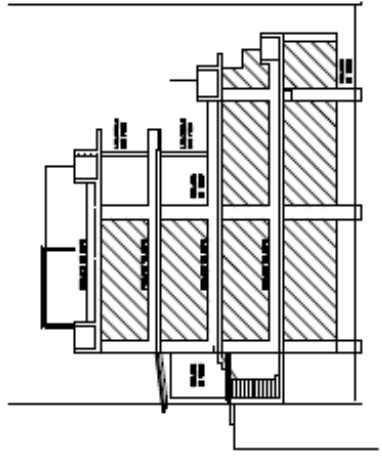
1:100 EAST ELEVATION



1:100 SECTION



1:100 STUDY PLAN



1:100 WEST ELEVATION

SCALE	1:100
DATE	1978
PROJECT	PROPOSED DEVELOPMENT, EAST SIDE OF LION STREET, 30-1999, 0999 1000
DESIGNER	SCH. KIRKPATRICK CO. CENTRAL STRUCTURAL ENGINEERS 1000 MARKET ST. 14th FLOOR SAN FRANCISCO, CALIF. 94102
CLIENT	STRUCTURAL LAYOUT
PROJECT NO.	1709-DI